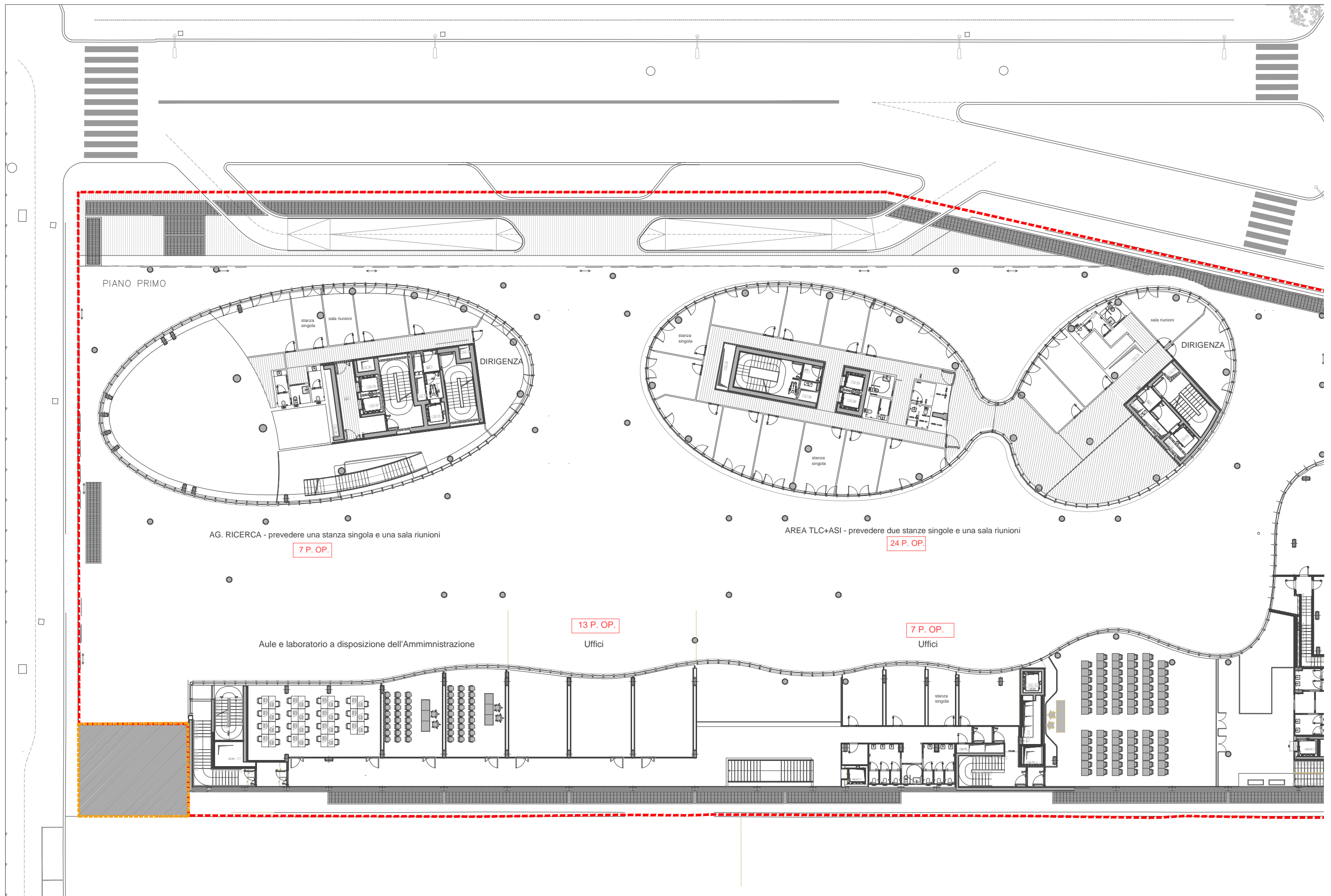
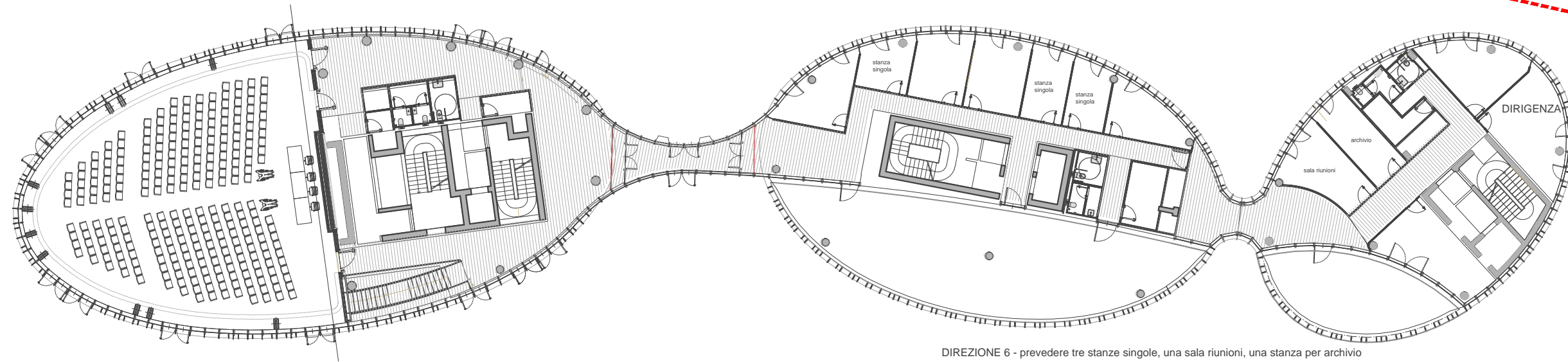


TOTALE PIANO TERRA = 26 Postazioni Operative



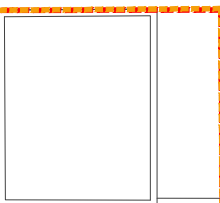
TOTALE PRIMO PIANO = 51 Postazioni Operative

PIANO SECONDO



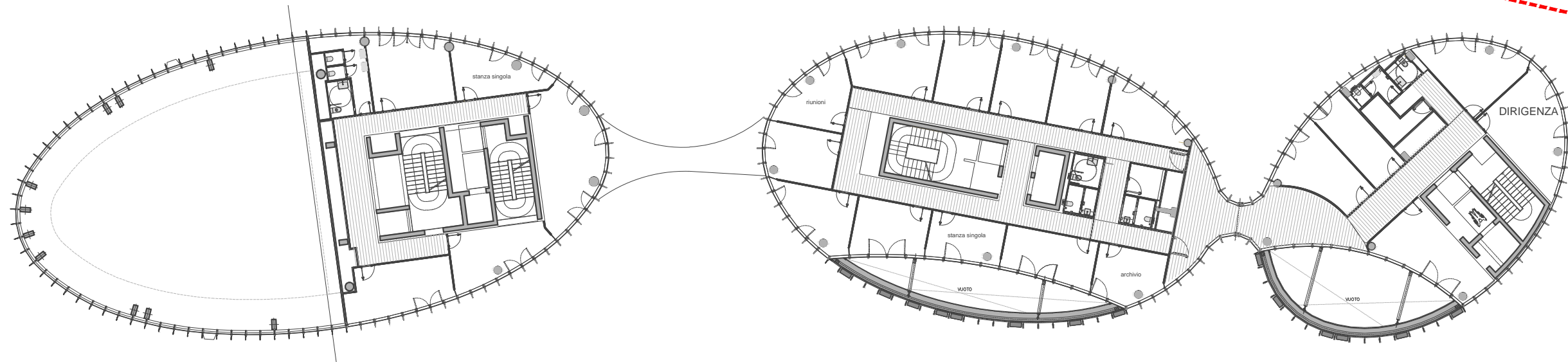
DIREZIONE 6 - prevedere tre stanze singole, una sala riunioni, una stanza per archivio

12 P.OP.



TOTALE SECONDO PIANO = 12 Postazioni Operative

PIANO TERZO

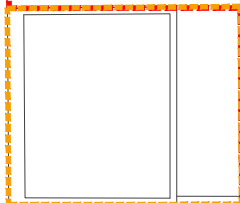


AREA COMUNICAZIONE - prevedere una stanza singola

10 P. OP.

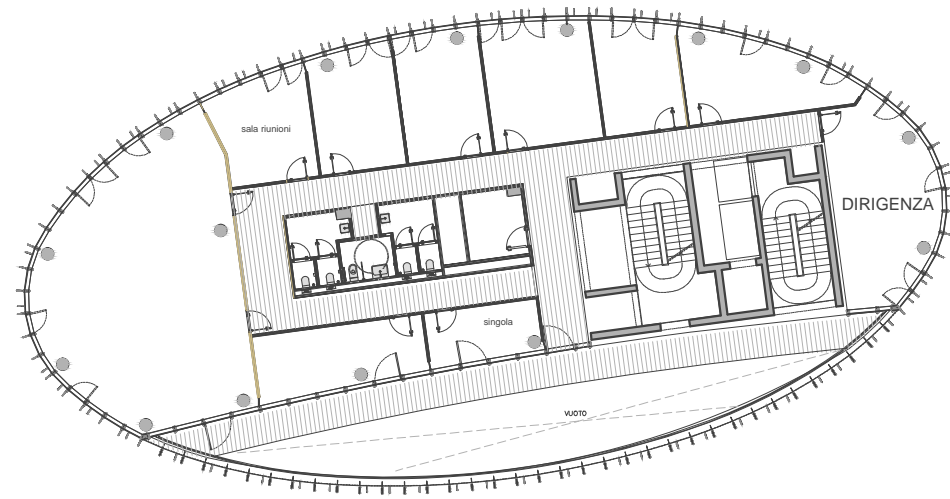
AREA FINANZIARIA - prevedere una stanza singola, una sala riunioni, una stanza per archivio/deposito

26 P. OP.



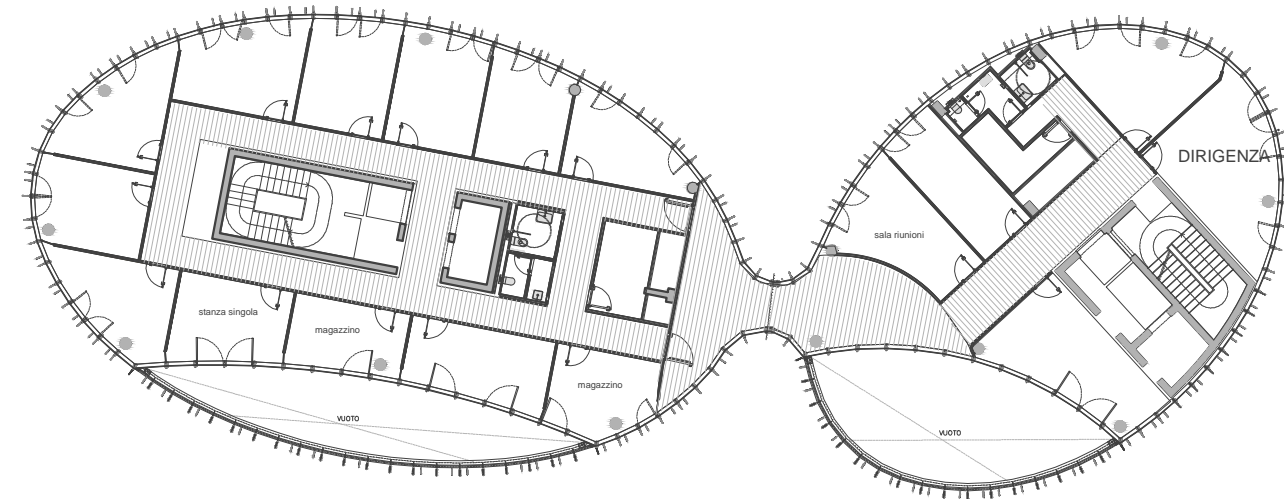
TOTALE TERZO PIANO = 36 Postazioni Operative

PIANO QUARTO



AREA AFFARI GENERALI - prevedere una stanza singola e una sala riunioni

14 P. OP.

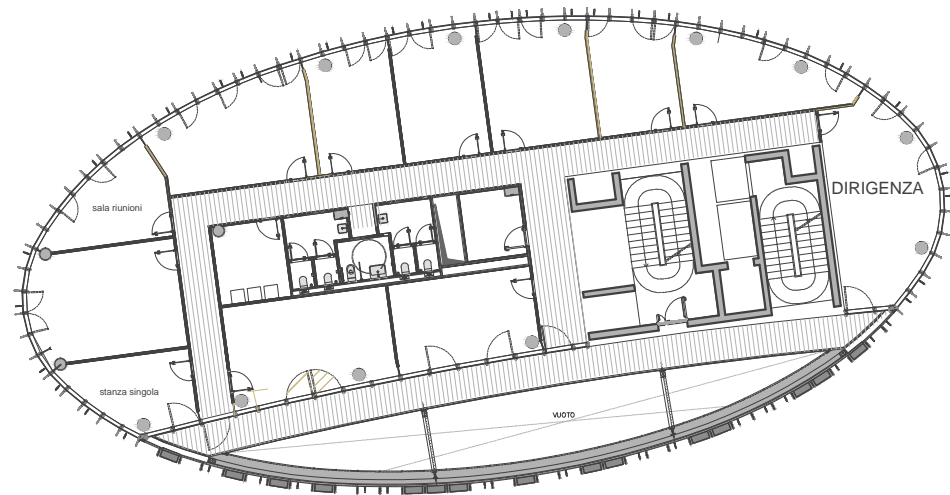


AREA PROVVEDITORATO+RAGIONERIA - prevedere una stanza singola, una sala riunioni e due stanze da adibire a magazzino

24 P. OP.

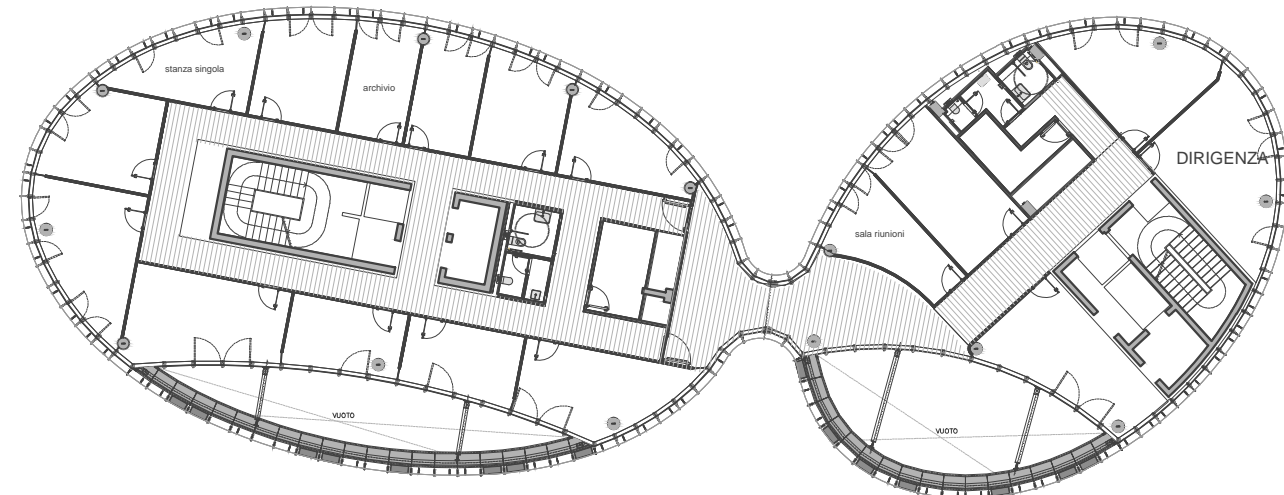
TOTALE QUARTO PIANO = 38 Postazioni Operative

PIANO QUINTO



AREA DEL PERSONALE - prevedere una stanza singola e una sala riunioni

23 P. OP.

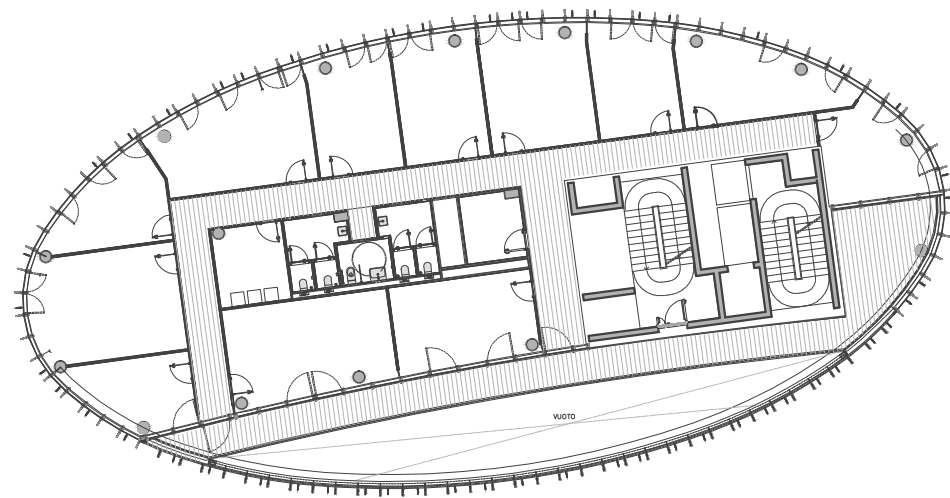


AREA CONTRATTI+PATRIMONIO - prevedere una stanza singola, una sala riunioni e una stanza per archivio

26 P. OP.

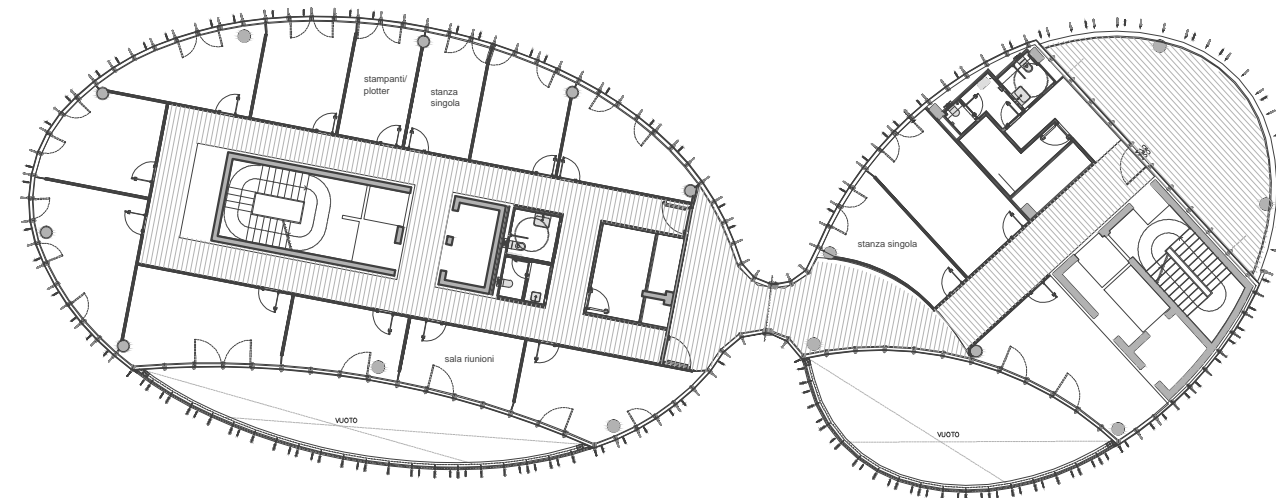
TOTALE QUINTO PIANO = 49 Postazioni Operative

PIANO SESTO



AREA DEL PERSONALE - solo operativi

29 P.OP.



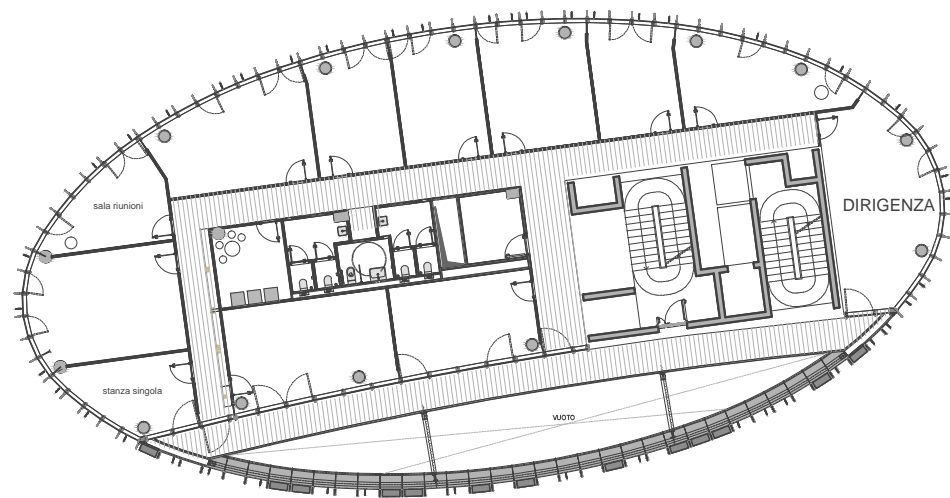
AREA TECNICA+PATRIMONIO - prevedere due stanze singole, una sala riunioni e una stanza per stampante/plotter/archivio

22 P.OP.

particella 123  
sub 501

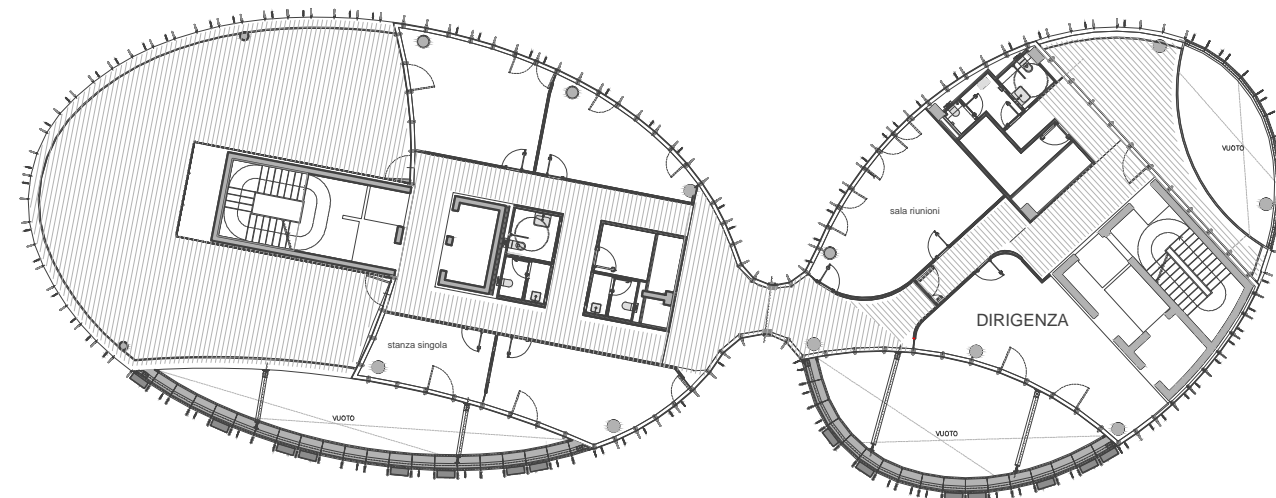
TOTALE SESTO PIANO = 51 Postazioni Operative

PIANO SETTIMO



AREA PROGRAMMAZIONE+CERIMONIALE - prevedere una stanza singola e una sala riunioni

23 P. OP.



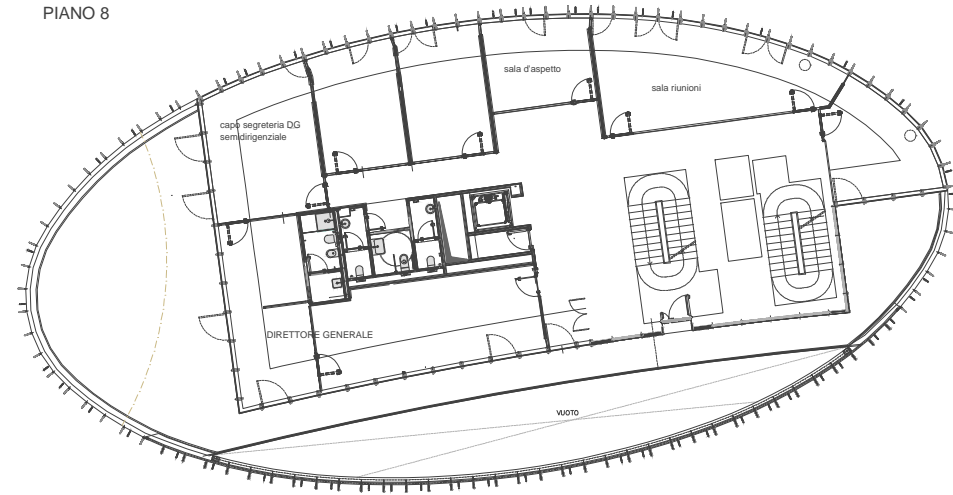
AREA PATRIMONIO - prevedere una stanza singola e una sala riunioni

7 P. OP.

particella 123  
sub 501

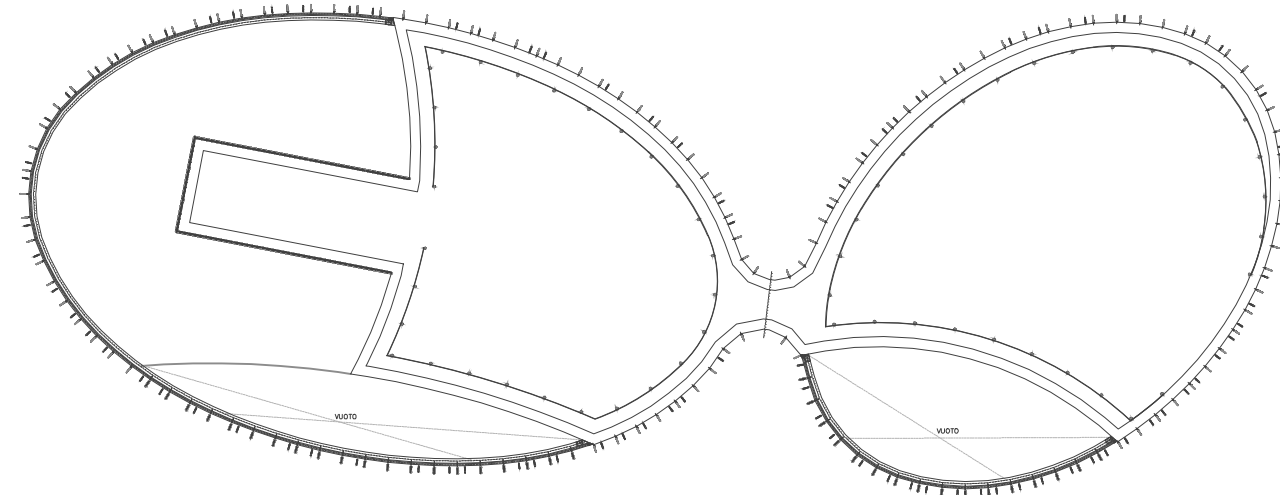
TOTALE SETTIMO PIANO = 30 Postazioni Operative

PIANO 8

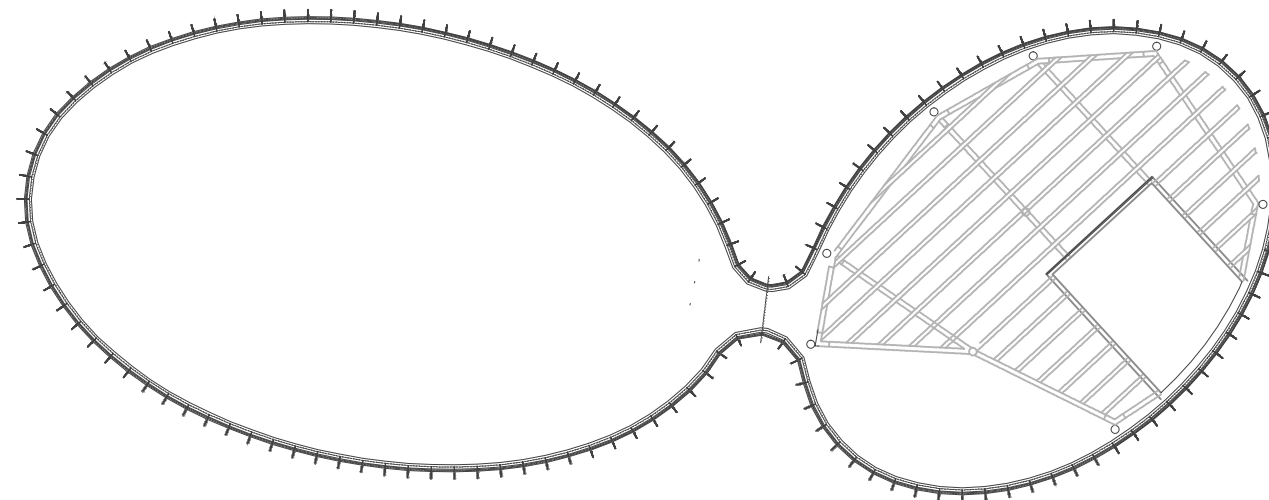
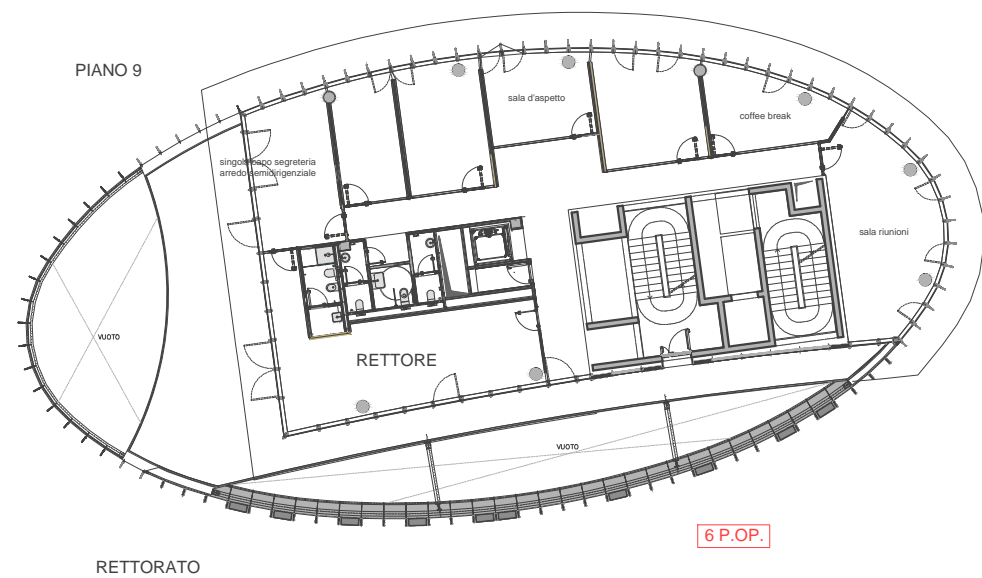


DIREZIONE GENERALE

4 P. OP.



TOTALE OTTAVO PIANO = 4 Postazioni Operative



TOTALE NONO PIANO = 6 Postazioni Operative